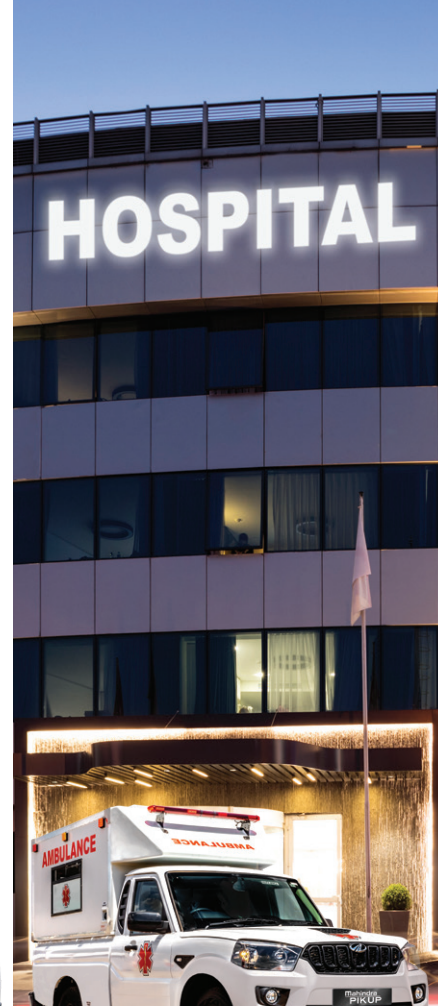
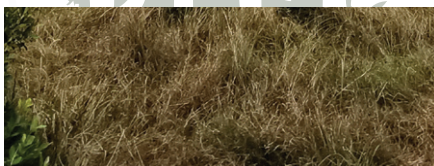


mahindra



DESIGNED WITHOUT COMPROMISE.

RELIABLE, CAPABLE YET AFFORDABLE. HELPING YOUR BUSINESS GROW.



A FRUGAL PERFORMER

The Mahindra XUV 3XO panel van is powered by the same 1.2-litre turbocharged petrol engine as the rest of the 3XO range, which offers 82kW at 5 000r/min and 200Nm between 1500 and 3500r/min and is available exclusively with a six-speed manual transmission.

The XUV 3XO is equipped with an advanced suspension system that includes a MacPherson strut fully independent front suspension and a twist beam semi-independent rear suspension.

This set-up ensures great ride quality that is both quiet and comfortable which, coupled with generous ground clearance, ensures that the XUV 3XO is ready to answer business needs by carrying loads safely and securely across a variety of terrains.

**The images shown are for illustration purposes only and may differ from the actual product.*

THE XUV3XO #XPRESZ PANEL VAN



**BIG LOADING CAPACITY WITH
A FIRM, FLAT HEAVY-DUTY
FLOOR**



XUV3XO PANEL VAN	
ENGINE, DRIVETRAIN & PERFORMANCE	
Capacity (cc)	1197
Engine configuration	In-line 3
Bore and stroke (mm)	76 x 88
Compression ratio	10 : 1
Turbocharger	With
Emission	Euro4
Fuel system	Petrol
Valve mechanism	12valve
Power (kW@rpm)	82 kW @ 5000 rpm
Torque (Nm@rpm)	200Nm @ 2000-3500 rpm
Fuel consumption (combined cycle)	6.6L/100km
CO ² (g/km)	139
Front Suspension	Macpherson
Rear Suspension	Torsion bar
Drive wheels	Front
Transmission	GMT

GEAR RATIO						
1 st	2 nd	3 rd	4 th	5 th	6 th	Reverse
4.385	2.174	1.464	1.081	0.854	0.705	3.000

EXTERIOR	
Front Bumper	Colour
Headlamps	Halogen Projector
Fog lamps	Without
Rear Bumper	Black
Front grille	Black with Chrome
Door handles	Colour
Outside rear view mirrors	Black, Electrically adjusted with Indicator
Roof	Standard colour
Roof rail	Without
Roof spoiler	Without
Tyre	205/65 R16
Wheel Rim	6J x 16
Spare wheel	T135/90 R16
Spare wheel location	In boot

DIMENSIONS & CAPACITIES	
Length (mm)	3990
Width (mm)	1821
Height (mm)	1617
Wheelbase (mm)	2600
Track front (mm)	1550
Track rear (mm)	1563
Ground clearance (mm)	201
Fuel tank (litres)	42
Gross Vehicle Mass (GVM) (kg)	1800
Gross Combination Mass (GCM) (kg)	2550
Tare / Kerb Mass (kg)	1410
Towing capacity (kg)	750

XUV3XO PANEL VAN	
INTERIOR, COMFORT & CONVENIENCE	
Seat capacity	2
Seat Trim	Black Fabric
Front Seats	Manual, Slide, Recline
Front seat belts	ELR, P/T, L/Limiter
Front headrests	Adjust, up-down
Glovebox	With
Cupholders	2
Door handle	Colour
Door courtesy lamp	Reflector
Inside Rear view mirror	Day-Night
Room lamp	Control
Windows	Elec, Dr-1touch down
Steering wheel	Urethane
Tyre position display	With
Steering wheel adjustments	Manual Tilt
Steering switches	Without
Sunvisor - Driver	With, without mirror
Sunvisor - Passenger	With, without mirror
Air conditioner	With, Rr Vent
Audio	9inch Display
Speakers	2
Cluster	3.5" LCD
Bluetooth	With
USB	USB2 + Rr15Wcharge
Aux	Without
Power socket	Rr 12V
Navigation	Without
Android Auto	With
Apple Carplay	With
Cruise control	Without
Overhead console	Without
Arm rest	With
Front Windscreen wipers	1-touch, Int
Rear wipers	Without
Rear Demister	Without
Power steering	EPS
Parking Assist	Rr Sonar, Rr Camera

XUV3XO PANEL VAN	
SAFETY	
Airbag qty	6
Front Airbags	D+P
Knee airbag	Without
Side airbags	D+P
Curtain airbags	RH + LH
Passenger A/B deactivation sw	With, lamp
Anti-theft system	Immobilizer
Isofix	Without
Parking Brake	Lever
Seatbelt warning	With
Front Brakes	Disc
Rear Brakes	Disc
ABS	With
Brake Assist	With
EBD	With
Hill Descent	Without
Traction / Stability Control	ESP

COLOURS	
Everest White	Std

WARRANTY & SERVICE INFORMATION	
Service plan	3yr/55 000 km
Service Interval	15 000km
1 st Service	10 000km
Warranty	5 Years / 150 000 kms

Please note: This information is correct at the time of going to press, but performance may differ in conditions other than those in which tests were conducted. In view of our policy of continuously improving our products, we reserve the right to alter specifications and designs without prior notice and without liability. Please consult your local dealer for latest specifications. Specifications, detailing and finishes differ on the various models available - please consult this specification sheet or your dealer for more information.

*Service plan and roadside assistance not applicable to vehicle sales in Botswana, Zambia and Zimbabwe.



THE LEGENDARY MAHINDRA GAMEVIEWER

THE MAHINDRA GAMEVIEWER SEATS 9 (+2 FOR DRIVER AND GUIDE) AND IS AVAILABLE IN VARIOUS CONVERSION OPTIONS: BASIC, SECTIONAL ROOF CUT-OUT, FOLD-DOWN WINDSCREEN, AND POLYCARBONATE SIDE PANELS

MEET THE GAME CHANGER

Superior technology and specs make our game viewer vehicle a common sighting on South Africa's reserves. Check out the specs for yourself and compare the costs. Reliability is key when you are out in the bush and our vehicles will always give you the peace of mind you deserve. Order the standard models or tell us how you would like to customize your vehicle to suit your business.



**The images shown are for illustration purposes only and may differ from the actual product.*

PIK UP SC 4X2 S4 AND PIK UP SC 4X4 S4 GAMEVIEWER	
TECHNICAL	
Engine type/aspiration	2.2m Hawk turbo diesel
Engine capacity	2179cc
Displacement/number of cylinders	4 cylinders
Fuel injection type	Common rail
Bore x stroke	85 mm x 96 mm
Compression ratio	15.5:1
Fuel type	Diesel
Power rating	103 kW @ 3750 rpm
Torque rating	320 Nm @ 1500-2800 rpm
Drive type	Optional 4X2 or 4x4
Gearbox type/transmission	6 Speed manual
Mechanical differential lock	Rear axle MLD
Brake type	Front - Disc Rear - Drum
Tyre size	245/75 R16
Spare wheel size	245/75 R16
Suspension front	Double wishbone with torsion bar
Suspension rear	Rigid leaf spring
Fuel tank capacity	80 L
Gcm	5650
Gvm	3150
Towing capacity - braked	2500 kg
Towing capacity unbraked	750 kg
Overall length	5175 mm
Overall width	1820 mm
Wheel base	3040 mm
Ground clearance	210 mm



PIK UP SC 4X2 S4 AND PIK UP SC 4X4 S4 GAMEVIEWER	
FEATURES	
Front fog lamps	•
Dual projector headlamps	•
High level brake light	•
Colour coded bumpers	•
Colour coded mirrors	•
Colour coded door handles	Manual
Mud flaps	•
Side steps	•
Internally adjusted ORVM	Manual

COMFORT & CONVENIENCE	
Air conditioner (Manual/electronic control)	Heater only
Heated rear window demister	n/a
Power windows front/back	-
Power steering	•
Tilttable steering	•
Central locking	-
12V Charging points	•
Integrated audio system with USB and AUX	-
Door speakers	-
Navigation system	-
Tyretronics	-
Cruise control	-
Steering mounted audio and cruise control	-
Swivel interior reading lamps	•
Remote fuel cap (electrically/key)	-
Adjustable headrests (rear/front)	•
Upholstery	Vinyl
Illuminated keyring	•

TECHNOLOGY	
Reverse camera	-
Digital immobiliser	•
Follow me home headlamps	-
Light sensing headlamps	-
Static bending headlamps	-



PIK UP SC 4X2 S4 AND PIK UP SC 4X4 S4 GAMEVIEWER	
SPECIAL FITMENTS	
Fold down windscreen	
False dashboard with riptop canvas	
Door panel according to conversion	
Standard front seats trimmed with riptop canvas	
Open front cab conversion	
Rubberised the cap	
Roll over compliant high roll cage	
One piece roof trimmed with riptop canvas	
9 separated rear bucket seats, trimmed	
Book and binoculars pockets	
2 rear body cut outs	
Rubberised load box	
9 lapbelt safety belts	
Fire extinguisher	
Optional: marine ply roof	
Optional: riptop canvas roll down sides	
Optional: 12V plug points inside cab	
Optional: spare wheel fitted in back of cage	

SAFETY	
Anti-locking braking system (ABS)	-
Electronic brake distribution (EBD)	-
Electronic stability program (ESP)	-
Hill hold and hill descent control	-
Seat belt pretensioner	-
Air bags (driver/passenger/side/curtain)	-
Seat belt reminders	•

WARRANTY & SERVICE INFORMATION	
Warranty	3yrs / 100k kms
Service plan	Optional
Service intervals	20 000 km
Roadside assistance	4 years/120 000 km

USP'S	
Fold down windscreen	
Seating 9 + 2 with safety belts	
Book and binocular pockets	
One piece roof trimmed with riptop canvas	
Rubberised load box	

Please note: This information is correct at the time of going to press, but performance may differ in conditions other than those in which tests were conducted. In view of our policy of continuously improving our products, we reserve the right to alter specifications and designs without prior notice and without liability. Please consult your local dealer for latest specifications. Specifications, detailing and finishes differ on the various models available - please consult this specification sheet or your dealer for more information.

*Service plan and roadside assistance not applicable to vehicle sales in Botswana, Zambia and Zimbabwe.

SOUTH AFRICA'S MINING VEHICLE

FITTED WITH A SET OF 24 DURABLE WHEEL NUT INDICATORS, ALONG WITH THE RELIABILITY OF THE 245/75R16 TYRE SIZE AND A MINIMUM GROUND CLEARANCE OF 210MM



HIT THE GROUND RUNNING

Developed, designed and fitted to suit South African conditions and regulations. We know how strict the safety regulations are in our country and every requirement has been met in our vehicles to satisfy the needs of open cast mining and largescale construction operations. Durability, reliability and affordability combine to make Mahindra a great choice for commercial mining.



**The images shown are for illustration purposes only and may differ from the actual product.*

CUSTOMISED AS STANDARD FOR MINING AND INDUSTRY

MAHINDRA'S LEGENDARY 2.2L MHAWK TURBO-DIESEL ENGINE WITH 6-SPEED MANUAL TRANSMISSION INCREASED POWER - 103KW AND HIGHER TORQUE - 320NM



FACTORY FITTED TOWBAR WITH TOWING CAPACITY OF 2.5T



12V CHARGING POINTS IN FRONT AND BACK ROWS



HEAVY DUTY SEAT COVERS FOR INCREASED WEAR AND TEAR



SAFETY FEATURES INCLUDE DRIVER AND PASSENGER AIRBAGS

NEW 8TH GENERATION TURBOCHARGER DRAMATICALLY IMPROVES PERFORMANCE AND FUEL CONSUMPTION ON AND OFF THE ROAD (7.8L/100KM)

ABS with EBD will keep you in control when you think you're losing control



HEAVY-DUTY ROLL-OVER PROTECTION WITH ROOF-MOUNTED LIGHT BAR AND LASER-CUT STEEL PROTECTION SCREEN



SECURE, LOCKABLE FIRST AID KIT AND COVID-19 KITS



STORAGE AREA



9KG FIRE EXTINGUISHER



RUBBERISED LOAD BAY WITH CARGO NET
RED, WHITE AND YELLOW SAFETY DECALING



REVERSE BUZZER
ROOF-MOUNTED LIGHT BAR



FIRE EXTINGUISHER, FIRST-AID KIT, COVID KIT
WHEEL NUT INDICATORS AND STOP BLOCKS

DESIGNED WITHOUT COMPROMISE

PIK UP SC 4X4 S6 AND PIK UP DC 4X4 S6 MINING

TECHNICAL	
Engine capacity	2179 cc
Number of cylinders	4
Fuel type	Diesel
Aspiration	Turbocharger
Fuel injection type	Common rail
Bore x stroke	85 x 96 mm
Compression ratio	16.5:1
Power output	103 kW @ 3750 r/min
Torque output	320 Nm @ 1500-2800 r/min
Fuel consumption - combined	7.9 l/100km (4WD)
CO ₂ Emission	211 gm/km (4WD)
Emission - Euro stage	Euro 2
Drive type	2WD & 4WD
Transmission	6-speed manual / automatic
Low range	on 4WD
Mechanical differential lock	Rear axle MLD
Wheel rim size	6.5J X 16"
Tyre size	245/75R16
Spare wheel	Full size spare
Spare wheel lock	Yes
GCM	5650 kg
GVM	3150 kg
Payload	995 kg (4WD)
Legal towing weight - braked	2500 kg
Legal towing weight - unbraked	750 kg
Overall length	5175 mm
Overall width	1820 mm
Overall height (unladen)	1915 mm
Minimum ground clearance	210 mm
Wheelbase	3040 mm
Track - front	1450 mm
Track - rear	1450 mm
Approach angle	34°
Breakover angle	18°
Departure angle	15°
Fuel tank capacity	80 litres
Turning circle radius	6.7 m
Load area (length x width x depth)	1489 X 1520 X 550 mm

PIK UP SC 4X4 S6 AND PIK UP DC 4X4 S6 MINING

FEATURES	
Front fog lamps	•
Dual projector headlamps	•
High-level brake light	•
Heated rear window	-
Colour-coded bumpers	•
Colour-coded mirrors	•
Colour-coded door handles	•
Mud flaps	•
Side step	•
Integrated bonnet scoop	•
Side mouldings	•
Rubberised load bin	•
External ROPS	•
Mining spec kit	•
Fire Extinguisher	•
Heavy-duty seat covers	•
First aid kit	•
Storage area	•

COMFORT & CONVENIENCE

Air conditioner	Manual
Heated rear window/demister	•
Power windows	•
Electric mirrors	•
Power steering	•
Tilttable steering	•
Central locking	•
Keyless entry	•
12V charging points - front and rear	•
Integrated audio system with USB and auxiliary	•
Swivel interior reading lamps	•
Headrests	•
Upholstery	Fabric
Illuminated key ring	•
Swivel interior reading lamps	•
Remote fuel cap (electrically/key)	•
Adjustable headrests (rear/front)	•
Illuminated keyring	•

PIK UP SC 4X4 S6 AND PIK UP DC 4X4 S6 MINING

SAFETY	
Anti-lock Braking System (ABS)	•
Electronic Brake Distribution (EBD)	•
Seat belt pretensioner	•
Air-bags (driver/passenger)	•
Side impact protection bars	•
Collapsible steering column	•
Seat belt reminder	•
Auto-locking doors	•
Electronic stability program (ESP)	•

TECHNOLOGY

Micro hybrid (Start/stop)	•
Digital immobiliser	•
Follow me home headlamps	•

WARRANTY & SERVICE INFORMATION

Warranty	4-Years/120000 km
Service plan	5-Years/90000 km
Service intervals	20000 km
1st service 10000 km, thereafter every 20000 km (with Maximile Oils)	
Roadside Assistance	4-Years/120000 km



**DURABILITY, RELIABILITY AND AFFORDABILITY
COMBINE TO MAKE MAHINDRA A GREAT
CHOICE FOR MINING**

Please note: This information is correct at the time of going to press, but performance may differ in conditions other than those in which tests were conducted. In view of our policy of continuously improving our products, we reserve the right to alter specifications and designs without prior notice and without liability. Please consult your local dealer for latest specifications. Specifications, detailing and finishes differ on the various models available - please consult this specification sheet or your dealer for more information.

*Service plan and roadside assistance not applicable to vehicle sales in Botswana, Zambia and Zimbabwe.

SAVING LIVES IS WHAT WE AIM FOR

Saving lives is something we take seriously. Our vehicles are specifically designed to render the absolute maximum capabilities in terms of aiding paramedics to perform their duties. Our vehicles are customizable to suit your requirements. Compare our value with anyone else and you'll be pleasantly surprised.



THE SA PIK UP AMBULANCE



THE PATIENT COMPARTMENT IS FITTED WITH AIR CONDITIONER, AN F-TYPE OXYGEN TANK WITH FLOW METER, AND AN ELECTRICALLY OPERATED WASH BASIN WITH FRESH WATER STORAGE

**The images shown are for illustration purposes only and may differ from the actual product.*

DESIGNED TO HELP PARAMEDICS PERFORM

VERTICALLY STORED SPINE BOARD



PA SYSTEM WITH SIREN



INTERIOR PATIENT CABIN FITTED WITH LIGHTING, SHOCK PROOF ANTI-SKID FLOORING, 12V POWER SUPPLY, AND SEATING WITH STORAGE CUPBOARDS



INTERCOM BETWEEN DRIVER AND PATIENT CABIN



AMBULANCE DECALS AND SLIDING WINDOWS WITH 4MM TOUGHENED FROSTED ARMOUR PLATE GLASS

CUSTOMISED TO SAVE LIVES



**MUD FLAPS AND SIDE STEP
HEATED REAR WINDOW DEMISTER**



**REAR FOOTSTEP AND RAMP
AUTO-LOCKING DOORS**



**INTERGRATED BONNET SCOOP
FOG LAMPS**

PIK UP SC S6 4X2 AMBULANCE	
TECHNICAL	
Engine type/aspiration	2.2m Hawk turbo diesel
Engine capacity	2179 cc
Displacement/number of cylinders	4 cylinders
Fuel injection type	Common rail
Bore x stroke	85mm x 96 mm
Compression ratio	15.5:1
Fuel type	Diesel
Power rating	103 kW @ 3750 rpm
Torque rating	320 Nm @ 1500-2800 rpm
Driver type	4x2
Gearbox type/transmission	6 Speed manual
Mechanical differential lock	Rear axle MLD
Brake type	Front - disc Rear - drum
Tyre size	245/75 R16
Spare wheel size	245/75 R16
Suspension front	Double wishbone with torsion bar
Suspension rear	Rigid leaf spring
Fuel tank capacity	80 L
Gcm	5650
Gvm	3150
Towing capacity - braked	2500 kg
Towing capacity - unbraked	750 kg
Overall length	5175 mm
Overall width	-
Wheel base	3040 mm
Ground clearance	210 mm

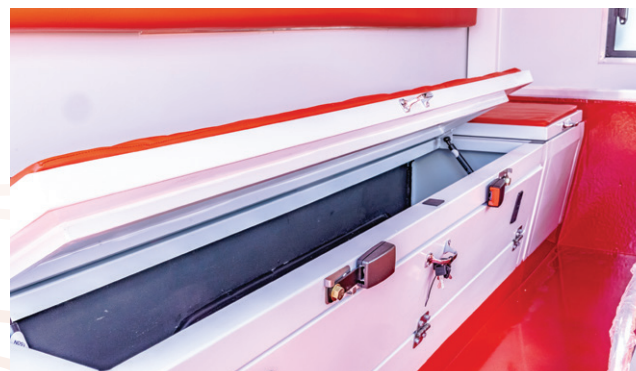
Please note: This information is correct at the time of going to press, but performance may differ in conditions other than those in which tests were conducted. In view of our policy of continuously improving our products, we reserve the right to alter specifications and designs without prior notice and without liability. Please consult your local dealer for latest specifications. Specifications, detailing and finishes differ on the various models available - please consult this specification sheet or your dealer for more information. *Service plan and roadside assistance not applicable to vehicle sales in Botswana, Zambia and Zimbabwe.



PIK UP SC S6 4X2 AMBULANCE	
FEATURES	
Front fog lamps	•
Dual projector headlamps	•
High level brake light	•
Colour coded bumpers	Front only
Colour coded mirrors	•
Colour coded door handles	•
Mud flaps	•
Side steps	•
Internally adjusted ORVM	•

COMFORT & CONVENIENCE	
Air conditioner (Manual/electronic control)	Manual aircon
Heated rear window demister	•
Power windows front/back	•
Power steering	•
Tilttable steering	•
Central locking	•
12V Charging points	•
Integrated audio system with USB & AUX	•
Door speakers	•
Cruise control	•
Steering mounted audio & cruise control	CC only
Swivel interior reading lamps	•
Remote fuel cap (electrically/key)	•
Adjustable headrests (rear/front)	•
Upholstery	Fabric
Illuminated keyring	•

TECHNOLOGY	
Reverse camera	-
Digital immobiliser	•
Follow me home headlamps	•
Light sensing headlamps	-
Static bending headlamps	-



PIK UP SC S6 4X2 AMBULANCE	
SPECIAL FITMENTS	
Insulated and painted canopy built on existing load bin	
4mm toughened and frosted side windows and rear door glass	
Anti-skid shock proof flooring	
Beacon lights	
PA system with siren	
Side blinkers	
Rear footstep	
Ramp	
2.5kg Fire extinguisher	
12V Power supply in patient cabin	
Rear spot lamp	
Intercom between driver and patient cabin	
Lighting in patient cabin	
Ventilator fans	
Roll and cot stretcher - 6ft	
Spine board	
Bell buzzer	
Seat for 3 people with storage	
Electrically operated wash basin with fresh water and waste storage	
Auxiliary battery fitted in rear storage compartment	
Ambulance decals	

SAFETY	
Anti-locking braking system (ABS)	•
Electronic brake distribution (EBD)	•
Electronic stability program (ESP)	•
Hill hold and hill descent control	-
Seat belt pretensioner	•
Air bags (driver/passenger/side/curtain)	DP
Seat belt reminders	•

WARRANTY & SERVICE INFORMATION	
Warranty	4 years/120 000 km
Service plan	Optional
Service intervals	20 000 km
Roadside assistance	4 years/120 000 km

USP'S	
Anti skid shock proof flooring	
PA system with siren	
2.5 kg Fire extinguisher	
Ventilation fans	
Seating for three people with under storage	

FULL SET OF AMBULANCE DECALS

UPPER AND LOWER STORAGE COMPARTMENTS IN THE PATIENT CABIN

TAKING YOUR BUSINESS TO NEW HEIGHTS WHILE ENSURING YOUR PRODUCTS REMAIN FRESH

The coolest delivery solution for your business is the Mahindra Pik Up Refrigerated Van. Our reliable, capable yet affordable S4 Single Cab is the hardest worker you'll ever have on your team. Made to inspire growth, the Mahindra Pik Up Refrigerated Van boasts with a 2.2L, 4 cylinder mHawk turbo-diesel engine. The Mahindra Refrigerated Van will take your business to new heights, whatever your requirements - we have the solution for you. Near or Far, from Fresh to Frozen goods; Medication, Vaccines and even your favourite Ice-creams - rest assured your customers get the best.

**The images shown are for illustration purposes only and may differ from the actual product.*

PIK UP REFRIGERATED VAN



PICK UP S4 REFRIGERATED VAN			
TECHNICAL DATA	APPLICATIONS		
	Fresh-Frozen Goods	Pharmaceuticals	Ice-cream
Engine capacity	2179 cc		
Number of cylinders	4		
Fuel type	Diesel		
Aspiration	Turbocharger		
Fuel injection type	Common rail		
Bore x stroke	85 x 96 mm		
Compression ratio	16.5:1		
Number of cylinders	4		
Power output	103 kW @ 3750 r/min		
Torque output	320 Nm @ 1500 - 2800 r/min		
Fuel consumption - combined	7.7 l/100 km*		
CO ₂ Emission	204 gm/km		
Emission - Euro stage	Euro 2		
Drive type	2WD		
Transmission	6-speed manual		
Mechanical differential lock	Rear axle MLD		
Wheel rim size	6.5J X 16"		
Tyre size	245/75R16		
Spare wheel	Full size spare		
GCM	5650 kg		
GVM	3150 kg		
Legal towing weight - braked	2500 kg		
Legal towing weight - unbraked	750 kg		
Overall length	4990 mm		
Overall width	1700 mm		
Overall height (unladen)	2540 mm*		
Minimum ground clearance	210 mm		
Wheelbase	3040 mm		
Track - front	1450 mm		
Track - rear	1450 mm		
Approach angle	34°		
Breakover angle	18°		
Departure angle	15°		
Fuel tank capacity	80 litres		
Turning radius	6.7 m		
Loading volume**	Fresh-Frozen: 5 190 L	Pharmaceutical: 5 560 L	Ice-Cream: 4 830 L
Loading capacity	600 kg		
Rear Doors	Double Door	Double Door	Single Door
Operating Temperature range	~0 → ~-18deg		~0 → ~-25deg

PICK UP S4 REFRIGERATED VAN	
FEATURES	ALL APPLICATIONS
New front grille with silver highlights	-
Fog lamps, new round style with silver bezel	-
New clear-lens side indicator with amber bulb	-
New clear lens dual projector headlamps	-
High-level brake light	•
One-touch lane change indicator	-
Colour-coded bumpers	-
Electric outside rear-view mirrors (ORVMs)	-
Colour-coded mirrors	-
Colour-coded door handles	-
Mud flaps	•
Side step	•
Integrated bonnet scoop	•
Side mouldings	•
Direct Drive	•
Electric standby	•

COMFORT AND CONVENIENCE	ALL APPLICATIONS
Air conditioner (Manual control)	Without
Heater and fan	•
Heated rear window demister	•
Power windows	-
Power steering	•
Tilttable steering	•
Central locking	-
Keyless entry	-
12V charging point on central bezel	•
Integrated audio system with USB & AUX	-
Swivel interior reading lamps	•
Height adjustable driver's seat	-
Arm rests for driver and passenger	-
Headrests	•
Upholstery	Vinyl
Electrically operated fuel lid	-
Illuminated key ring	•

TECHNOLOGY	ALL APPLICATIONS
Micro hybrid (Start/stop)	•
Cruise control	-
Digital immobiliser	-
Follow me home headlamps	-
Automatic headlamp reminder	-

PICK UP S4 REFRIGERATED VAN	
SAFETY	ALL APPLICATIONS
Anti-Lock Braking System (ABS)	-
Electronic Brake Distribution (EBD)	-
Seat Belt Pretensioned	-
Air-Bags (Driver Passenger)	-
Side impact protection bars	•
Collapsible steering column	-
Crash bar	•
Seat belt reminder	•
Auto-locking doors	-

WARRANTY AND SERVICE INFORMATION S4 - ALL APPLICATIONS	
Vehicle Warranty	4-Years/120 000 km
Service plan**	Optional
Service intervals	20 000 km
1st service 10 000 km, thereafter every 20 000 km (with Maximile Oils)	
Roadside Assistance**	4-Years/ 120 000 km

Please note: This information is correct at the time of going to press, but performance may differ in conditions other than those in which tests were conducted. In view of our policy of continuously improving our products, we reserve the right to alter specifications and designs without prior notice and without liability. Please consult your local dealer for latest specifications. Specifications, detailing and finishes differ on the various models available - please consult this specification sheet or your dealer for more information.

**Service plan and roadside assistance not applicable to vehicle sales in Botswana, Zambia and Zimbabwe.



* Fuel consumption is based on standardized, laboratory tests and the actual fuel consumption in real-world driving will vary

**Estimated value - actual value may differ.



Customer Care: 📞 (012) 661 3161
Email: customercare@mahindra.co.za
www.mahindra.co.za

First Floor Block A Southdowns Ridge Office Park
John Vorster Drive (corner Nelmapius)
Southdowns Centurion
P O Box 69079 Highveld Park
0169 South Africa



PLEASE NOTE: Some of the equipment shown in this brochure may not be available on all models or in all markets. Some finishes and specifications are also not available in all markets. All specifications are subject to change without notice. Please contact your local dealer for the latest information.

DATE OF PUBLICATION: NOV 2025
PART NO: BROCHURE 20427

MAHINDRA RECOMMENDS YOU USE ONLY



#mahindra
**GreatValue
GreatService**

Mahindra. Unleash the Explorer in You.
mahindra.co.za
Ts & Cs Apply.



The new mzanzi app is now available for care, maintenance and a lot more

